

Northland Compete USA Competition

Held in conjunction with the

40th Annual Northland Figure Skating Competition

Official host of the 2020 Excel Series Events



February 2, 2020 Duluth, MN
Basic Skills Events

Hosted by the Duluth Figure Skating Club
www.duluthfsc.org

Chief Referee: Jennifer Marker Johnson
Chief Technical Accountant: Carolyn Marker

Chief Accountant: Christine Hills
Music Coordinator: Mike Wittmann

Co- Chairs: Leanne Warren and Kalli Manion
Email: northlandcompetition@gmail.com

ENTRY DEADLINE IS DECEMBER 8, 2019



The **Duluth Figure Skating Club** is hosting the Northland Compete USA Competition in conjunction with its annual Northland Competition. The competition will be held February 2, 2020 at the Duluth Entertainment Convention Center (www.decc.org), 350 Harbor Drive, Duluth, MN 55802.

General Rules: The competition is open to ALL skaters who are current eligible (ER 1.00) members of either the Learn to Skate USA program and/or are full members of U.S. Figure Skating. To be eligible, skaters must have submitted a membership application or be a member in good standing. Members of other organizations are eligible to compete but must be registered with the host Learn To Skate USA program club or any other Learn to Skate USA program/club.

Eligibility will be based on skill level as of closing date of entries. ALL SNOWFLOW SAM AND LEARN TO SKATE USA SKATERS THROUGH BASIC 6 must skate at highest level passed or one level higher and NO official U.S. Figure Skating tests may have been passed including Moves in the Field or individual dances. Skaters in other events may skate at the highest level passed or one level higher but not both levels in the same event during the same competition.

Entry: Online registration: online registration is available via a secured credit card transaction at www.duluthfsc.org, serviced by *Entryeze*. Registration must be completed by midnight, **December 8, 2019**. Upon receiving your application online an email will be sent to the skater's coach to verify accuracy of entry. An official at the skater's home club will also be notified to certify the skater's standing within the club. *It is the skaters' and coaches' responsibility to verify that the skater has entered the correct event and level. Any change in a skater's event/level after the entry deadline is subject to a \$25.00 change fee. Late entries are only accepted at the discretion of the Referee and subject to a \$25.00 late fee.*

Fees: Fee for a skater's first event is \$95.00. If entering a second event (which must be entered at the same level), the additional fee is \$25.00. **There are no refunds (including medical circumstances) after the registration closing date.** The registration fee includes one video and every picture from one event, including awards.

Admission and Event Programs: There is no admission charge for the Northland Competition. **There is a \$5.00 Parking fee at the DECC per day.** Event programs may be pre-purchased for \$10.00 with a limited quantity available for purchase at the competition.

Registration: The Registration Desk will be located in the DECC's Edmund Fitzgerald Hall. Skaters must check in at least one hour prior to their first event. Events may run ahead at the discretion of the Referee. Please plan to check in with the rink monitor at least 45 minutes prior to your event's scheduled start time. All schedules will be posted on an official bulletin board near the registration desk. It is the responsibility of each competitor to check this board for official schedules and notices.

Practice ice: Practice ice will be available for purchase online via *Entryeze* or at the Registration Desk. Pre-paid practice ice is being offered to competitors for a cost of \$16.00 for each 20-minute session. Skaters will be able to pick their own practice ice sessions online but you must indicate the number of sessions you want during the registration process and must be pre-paid with your entry. Additional practice ice sessions will be available for a cost of \$18.00 after the schedule has been posted and those that pre-register for sessions have had time to select their sessions. Practice ice will also be available for purchase during the competition and will be sold for a cost of \$20.00.

Locker Rooms and Changing Areas: This event will be following the Locker Rooms and Changing Area policy included in the SafeSport Handbook. Please click here to review the [Locker Rooms and Changing Area policy](#). More detailed information can be found in the [SafeSport Handbook](#). It is advised to arrive to the rink 45 minutes prior to your scheduled event and be prepared to skate. All locker rooms will have their doors kept open, there will be no changing areas available. Bathrooms are available throughout the facility, however, we advise that skaters come dressed and ready to skate.

Music: Only standard format CD's clearly marked with the competitor's name will be accepted. A CD must have only ONE track on it. Each CD must be in a paper CD sleeve with a see-through window. Standard hard plastic jewel cases or other CD holders are no longer acceptable. Music must be turned in at the registration desk when checking in for the competition. Music may be picked up at the registration desk after completion of the event. Music WILL NOT be mailed to skaters after the competition.

Awards/Photographs/Videotaping: Awards will be presented to all skaters in Edmund Fitzgerald Hall after the results are posted. An official event photographer will be present to take action photos and award photos. **Your registration includes one video and every picture from one event, including awards. Additional videos and photos for other events will be available to purchase.**

Important Notice for All Coaches:

To be a credentialed coach at a sanctioned nonqualifying competition, coaches must meet the following requirements:

Coaching U.S. Figure Skating athletes:

- Current member in good standing with U.S. Figure Skating
- Completed background check (green light status)
- Completed SafeSport Training*
- Continuing Education Requirements (CERs) for the 2018-19 Competition Season
- Proof of current general liability insurance with limits of \$1 million per occurrence/\$5 million aggregate.

Coaching Compete USA athletes:

- Learn to Skate USA Instructor membership OR U.S. Figure Skating full membership
- Completed SafeSport Training* (for coaches 18 years old and over)
- Completed background check (green light status) (for coaches 18 years old and over)
- Learn to Skate USA Instructor Certification completed (for coaches under 18 years old)

*SafeSport training is available through www.usfsaonline.org for full members of U.S. Figure Skating (through Learn to Skate USA portal for instructors). There is no cost to this training and certification is valid for 2 seasons.

The local organizing committee will have a list of compliant coaches who are approved to receive a credential at the competition. Coaches will need to check in at the event registration desk and show a government issued photo I.D. to receive a credential. **Coaches will need to wear the official competition name badge in order to be permitted in the designated coaching area at rink side during events.**

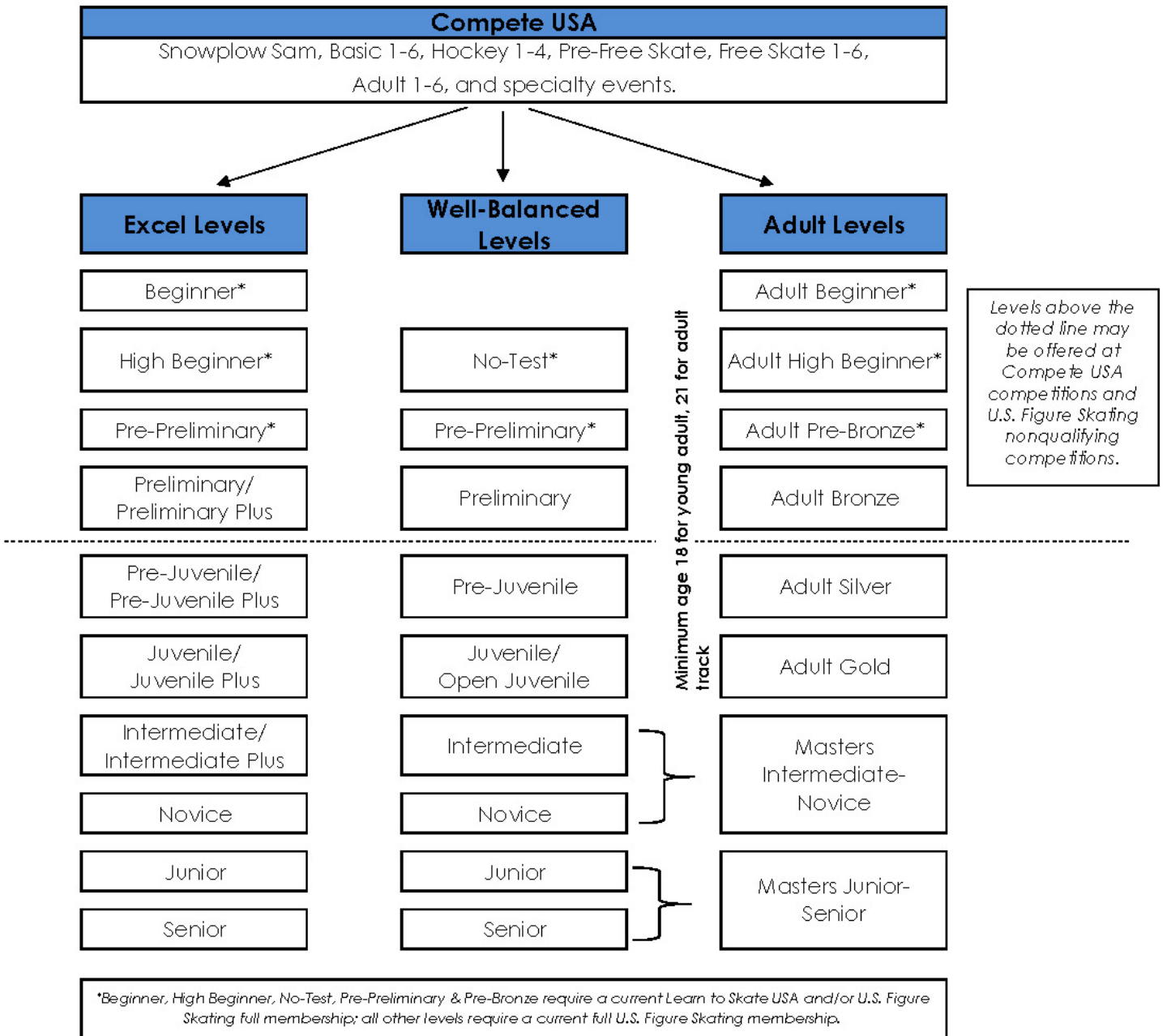
If a coach cannot provide a photo I.D. and is not on the list or cannot produce the necessary documents, he or she will not be allowed a credential. There can be no exceptions to this policy. We strongly urge all coaches to have their cards with them. Non-credentialed coaches will not be permitted in the designated coaching area at rink side during events including practice sessions. Coaching at U.S. Figure Skating events without proper registration is an ethics violation, which is reported to U.S. Figure Skating and PSA.

If a foreign coach has only foreign athletes at your competition, a background check and SafeSport Training is not required. Instead, the coach must submit a letter from their Federation stating they are a member in good standing.



COMPETITIVE PROGRESSION THROUGH THE LEVELS OF U.S. FIGURE SKATING

Singles athletes begin with Compete USA competitions. Once athletes begin the official U.S. Figure Skating test structure, they can choose to enter the Excel, Well-Balanced or Adult levels as appropriate for their ability, test level, and age. Test requirements are the same for the Excel and Well-Balanced levels. It is completely the choice of the athlete which track to follow; athletes may switch between tracks as best suits their development, but may not enter the same type of event in multiple tracks. Competitive level is determined by highest free skate test passed.



SNOWPLOW SAM – BASIC 6 ELEMENTS

Two format options for the Elements Event:

1. Each skater will perform each element when directed by a judge/referee OR
 2. Skater will perform one element at a time in the order listed below (no excessive connecting steps or choreography)
 Judge/referee directed example: all skaters perform first element before moving on to the next and so on, or each skater performs all of the required elements before moving on to the next skater.
- To be skated on 1/3 to 1/2 ice (determined by the LOC)
 - No music
 - Divide Snowplow Sam skaters by level (1-4), if registrations warrant
 - **All elements must be skated in the order listed.**

Level	Time	Skating rules/standards
Snowplow Sam	1:00 max.	<ul style="list-style-type: none"> • March followed by a two-foot glide and dip • Forward two-foot swizzles, 2-3 in a row • Forward snowplow stop • Backward wiggles, 2-6 in a row
Basic 1	1:00 max.	<ul style="list-style-type: none"> • Forward two-foot glide and dip • Forward two-foot swizzles, 6-8 in a row • Beginning snowplow stop on two-feet or one-foot • Backward wiggles, 6-8 in a row
Basic 2	1:00 max.	<ul style="list-style-type: none"> • Forward one-foot glide (no variations), either foot • Scooter pushes, right and left foot, 2-3 each foot • Moving snowplow stop • Two-foot turn in place, forward to backward • Backward two-foot swizzles, 6-8 in a row
Basic 3	1:00 max.	<ul style="list-style-type: none"> • Beginning forward stroking showing correct use of blade • Forward ½ swizzle pumps on a circle, either clockwise or counterclockwise, 4-6 consecutive • Forward slalom • Moving forward to backward two-foot turn on a circle • Beginning backward one-foot glide, either foot
Basic 4	1:00 max.	<ul style="list-style-type: none"> • Forward outside edge on a circle, clockwise or counterclockwise • Forward crossovers, 4-6 consecutive, clockwise and counterclockwise • Backward ½ swizzle pumps on a circle, either clockwise or counterclockwise, 4-6 consecutive • Backward one-foot glides (no variations), right and left • Beginning two-foot spin, maximum 4 revolutions
Basic 5	1:00 max.	<ul style="list-style-type: none"> • Backward outside edge on a circle, clockwise or counterclockwise • Backward crossovers, 4-6 consecutive, clockwise and counterclockwise • Forward outside three-turn, right and left • Advanced two-foot spin, minimum 4 revolutions • Hockey stop
Basic 6	1:00 max.	<ul style="list-style-type: none"> • Forward inside three-turn, right and left • Bunny Hop • Basic forward spiral on a straight line (no variations), right or left • Beginning one-foot spin, maximum 3 revolutions, optional free leg held position and entry • T-stop, right or left

SNOWPLOW SAM – BASIC 6 PROGRAM WITH MUSIC

Format: The skating order of the required elements is optional. The elements are not restricted as to the number of times the element is executed or length of glides, number of revolutions, etc., unless otherwise specified.

- To be skated on full ice with music.
- The skater may use elements from a previous level.
- A 0.2 deduction will be taken for each element performed from a higher level. Bonus skills from the same level or below are allowed but will not be judged elements.
- Divide Snowplow Sam skaters by level (1-4), if registrations warrant

Level	Time	Skating rules/standards
Snowplow Sam	1:10 max.	<ul style="list-style-type: none"> • March followed by a two-foot glide and dip • Forward two-foot swizzles, 2-3 in a row • Forward snowplow stop • Backward wiggles, 2-6 in a row
Basic 1	1:10 max.	<ul style="list-style-type: none"> • Forward two-foot glide and dip • Forward two-foot swizzles, 6-8 in a row • Beginning snowplow stop on two-feet or one-foot • Backward wiggles, 6-8 in a row
Basic 2	1:10 max.	<ul style="list-style-type: none"> • Forward one-foot glide (no variations), either foot • Scooter pushes, right and left foot, 2-3 each foot • Moving snowplow stop • Two-foot turn in place, forward to backward • Backward two-foot swizzles, 6-8 in a row
Basic 3	1:10 max.	<ul style="list-style-type: none"> • Beginning forward stroking showing correct use of blade • Forward ½ swizzle pumps on a circle, either clockwise or counterclockwise, 4-6 consecutive • Forward slalom • Moving forward to backward two-foot turn on a circle • Beginning backward one-foot glide, either foot
Basic 4	1:10 max.	<ul style="list-style-type: none"> • Forward outside edge on a circle, clockwise or counterclockwise • Forward crossovers, 4-6 consecutive, clockwise and counterclockwise • Backward ½ swizzle pumps on a circle, either clockwise or counterclockwise, 4-6 consecutive • Backward one-foot glides (no variations), right and left • Beginning two-foot spin, maximum 4 revolutions
Basic 5	1:10 max.	<ul style="list-style-type: none"> • Backward outside edge on a circle, clockwise or counterclockwise • Backward crossovers, 4-6 consecutive, clockwise and counterclockwise • Forward outside three-turn, right and left • Advanced two-foot spin, minimum 4 revolutions • Hockey stop
Basic 6	1:10 max.	<ul style="list-style-type: none"> • Forward inside three-turn, right and left • Bunny Hop • Basic forward spiral on a straight line (no variations), right or left • Beginning one-foot spin, maximum 3 revolutions, optional entry and free leg position • T-stop, right or left

PRE-FREE SKATE – FREE SKATE 1-6 COMPULSORY

Format: In simple program form, using a limited number of connecting steps, the skating order of the required elements is optional.

- To be skated on ½ ice.
- No music
- The skater must demonstrate the required elements listed
- **Bonus skills from the same level or below are allowed but will not be judged elements.**
- A 0.2 deduction will be taken for each element performed from a higher level.

Level	Time	Skating rules/standards
Pre-Free Skate	1:15 max.	<ul style="list-style-type: none"> • Forward inside open Mohawk from a standstill position (R to L and L to R) • Two forward crossovers into a forward inside Mohawk, step down and cross behind, step into one backward crossover and step to a forward inside edge, one set each direction clockwise and counterclockwise • One-foot upright spin, optional entry and free-foot position - minimum 3 revolutions • Mazurka – right or left • Waltz jump
Free Skate 1	1:15 max.	<ul style="list-style-type: none"> • Forward stroking, 4-6 consecutive powerful strokes • Backward outside three-turn, right and left • One-foot upright spin, entry from backward crossovers, with free foot in crossed leg position (scratch spin) - minimum 4 revolutions • Toe loop • Half flip jump
Free Skate 2	1:15 max.	<ul style="list-style-type: none"> • Alternating forward outside spiral (right and left) and forward inside spiral (right and left) on a continuous axis • Backward inside three-turn, right and left • Beginning back spin, optional entry and free-foot position - maximum 3 revolutions • Half Lutz • Salchow jump
Free Skate 3	1:15 max.	<ul style="list-style-type: none"> • Alternating Mohawk/crossover sequence, right to left and left to right • Waltz three-turns, 2 sets clockwise and 2 sets counterclockwise • Advanced back spin with free foot in crossed leg position- minimum 3 revolutions • Loop jump • Waltz jump/toe loop or Salchow/toe loop jump combination
Free Skate 4	1:15 max.	<ul style="list-style-type: none"> • Forward power 3's, 2-3 consecutive sets, right or left • Sit spin - minimum 3 revolutions • Euler (half loop jump) • Flip jump
Free Skate 5	1:15 max.	<ul style="list-style-type: none"> • Backward outside three-turn, Mohawk (backward power three-turn), 2-3 sets both directions • Camel spin - minimum 3 revolutions • Waltz jump/loop jump combination • Lutz jump
Free Skate 6	1:15 max.	<ul style="list-style-type: none"> • Forward power pulls, minimum 3 on each foot • Camel, sit spin combination - minimum of 4 revolutions total • Waltz jump/Euler (half loop)/ Salchow jump combination • Axel jump; minimum requirement is a clear attempt either stationary or moving

PRE-FREE SKATE – FREE SKATE 1-6 PROGRAM WITH MUSIC

Format: The skating order of the required elements is optional. The elements are not restricted as to the number of times an element is executed, length of glides, number of revolutions, etc., unless otherwise stated. Connecting steps and transitions should be demonstrated throughout the program.

- To be skated on full ice.
- The skater must demonstrate the required elements and may use but is not required to use any additional elements from previous levels.
- **Bonus skills from the same level or below are allowed but will not be judged elements.**
- A 0.2 deduction will be taken for each element performed from a higher level.

Level	Time	Skating rules/standards
Pre-Free Skate	1:40 max.	<ul style="list-style-type: none"> • Two forward crossovers into a forward inside Mohawk, step down and cross behind, step into one backward crossover and step to a forward inside edge, one set each direction clockwise and counterclockwise • One-foot upright spin, optional entry and free-foot position- minimum 3 revolutions • Mazurka - right or left • Waltz jump • <i>NOT ALLOWED -Waltz jump, side toe hop, waltz jump</i>
Free Skate 1	1:40 max.	<ul style="list-style-type: none"> • Forward stroking, 4-6 consecutive powerful strokes • One-foot upright spin, entry from backward crossovers, with free foot in crossed leg position (scratch spin) - minimum 4 revolutions • Toe loop jump • Half flip jump • <i>NOT ALLOWED – Waltz jump/toe loop combination</i>
Free Skate 2	1:40 max.	<ul style="list-style-type: none"> • Alternating forward outside spiral (right and left) and forward inside spiral (right and left) on a continuous axis • Beginning back spin, optional entry and free-foot position, maximum 3 revolutions • Half Lutz • Salchow jump • <i>NOT ALLOWED – Waltz jump/toe loop and Salchow/toe loop combination</i>
Free Skate 3	1:40 max.	<ul style="list-style-type: none"> • Alternating Mohawk/crossover sequence, right to left and left to right • Advanced back spin with free foot in crossed leg position, minimum 3 revolutions • Loop jump • Waltz jump/toe loop or Salchow/toe loop jump combination • <i>NOT ALLOWED – Waltz/loop combination</i>
Free Skate 4	1:40 max.	<ul style="list-style-type: none"> • Forward power 3's, 2-3 consecutive sets, right or left • Sit spin – minimum 3 revolutions • Euler (half loop jump) • Flip jump • <i>NOT ALLOWED – Waltz/loop and Waltz/Euler/Salchow combination</i>
Free Skate 5	1:40 max.	<ul style="list-style-type: none"> • Backward outside three-turn, Mohawk (backward power three-turn), 2-3 sets both directions • Camel spin – minimum 3 revolutions • Waltz/loop jump combination • Lutz jump
Free Skate 6	1:40 max.	<ul style="list-style-type: none"> • Creative step sequence using a variety of three turns, Mohawks and toe steps, half-ice • Camel, sit spin combination - minimum of 4 revolutions total • Waltz jump/ Euler (half loop)/Salchow jump combination • Axel jump; minimum requirement is a clear attempt either stationary or moving